

Project Management

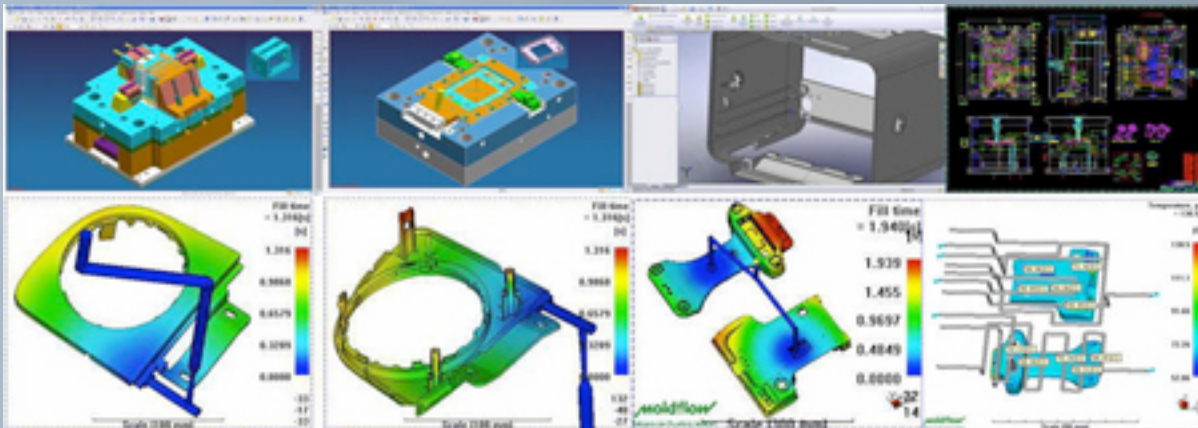
KP Metallurgical Casting Company Limited selected injection moulding factory with state-of-the-art high quality mould and design. Our design team consist of 20 skilled designers and the director with 15 years experience in mould design and manufacture oversee the Engineering Department to provide a full solution from product development to mould manufacturing.

After many years of accumulated experience we have procured a mature and high efficient project management procedure. Our project managers and engineers are fully trained in with in-depth technical knowledge to enable and manage the entire process from the first stage of concept to final completion. After receiving customer's PO a detailed production schedule is tailored and strictly tracked by our project managers and engineers. All our project managers and engineers are fully qualified and experience in mould design and mould manufacture.

Since 1996 we have built an integrated system to enable efficient project management for quotation purposes, design manufacture, quality control, mould tests, delivery and customer service. With each mould trial, a moulding record and samples inspection report is provided once in production a weekly report is presented with photographic evidence, this enables the customer to know their detailed process status during every stage of production through to delivery. Our project managers keep a close and informative communication with every customer throughout every stage of development.

CAD/CAM/CAE

International advanced CAD/CAM/CAE system in mould design and manufacture to ensure your design ideas can be transformed into actual products. With 2D drawing in DXF, DWG, PDF and 3D data in PRT, X-T, IGES, STEP format etc. The moulds are produced according to international standard i.e. DME, HASCO, DAIDO or customised standard as required by specified country or region, If required, a mould flow analysis can be produced before production.



Work Software:

- AutoCAD
- Unigraphics CAD/CAM
- Pro/Engineer
- SolidWorks
- MoldFlow
- Master-CAM

Hot Runner Mould

Extended experience in hot runner mould that co-operate with many hot runner suppliers, including MOLD-MASTER, YUDO, HASCO, DME, SYNEVNTIVE, MASTER TIP, HUSK etc, according to customer's requirements.



Double Injection Mould

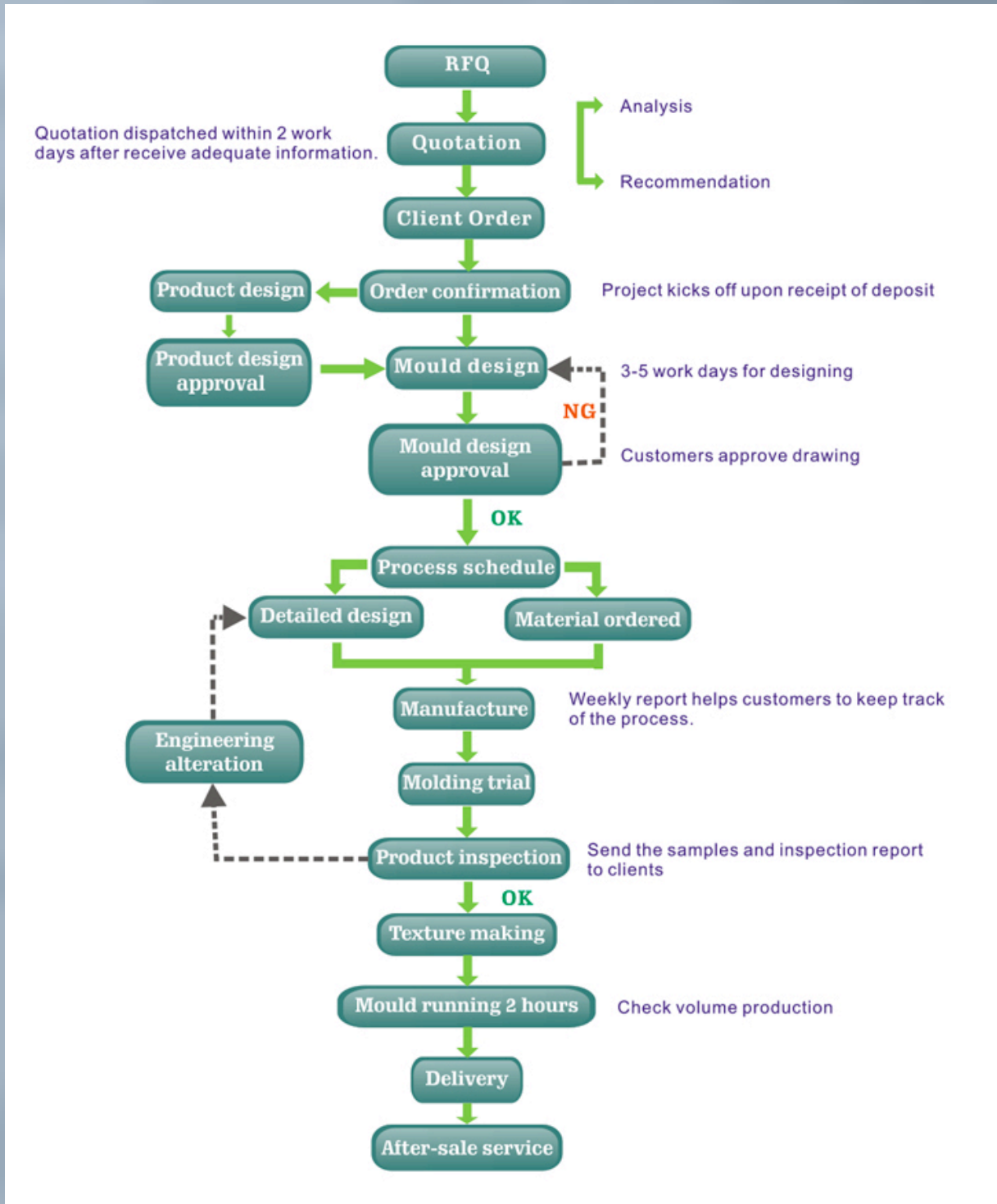
Double injection moulds applied in handle, keypad, for consumer product



Steel Material

Material Standard		
Mould Steel	LKM(China)	LKM2344SUPER
		LKM2344
		LKM818H
		LKM838H
		LKM738H
		LKM2311
		LKM2312
	Thyssen(Germany)	GS-P20M
		GS-711
		GS-738
		GS-344
		GS-344 ESR
		GS-083
		GS-083H
	GS-767	
	ASSAB(Sweden)	IMPAX 718S
		IMPAX 718H
		STAVAX S136
		STAVAX S136H
	DAIDO (Japan)	PX88, NAK55, NAK80, DC11, DC53
	FINKL (America)	P20HH, P20LQ
AUBERT & DUVAL (France)	ADC3, SMV3W, EMK4, X13T6W(236)	
Mould Base	DME, HASCO, FUTABA, LKM	
Hot Runner	Moldmaster, Syventive, Master TIP, HUSKY, HASCO, DME, YUDO	
Standard components	DME, HASCO, STRACK, LKM, OTHER	
Texture	Mold-Tech, YIXIN, Ni Hong	

Project Procedure



Project Documents



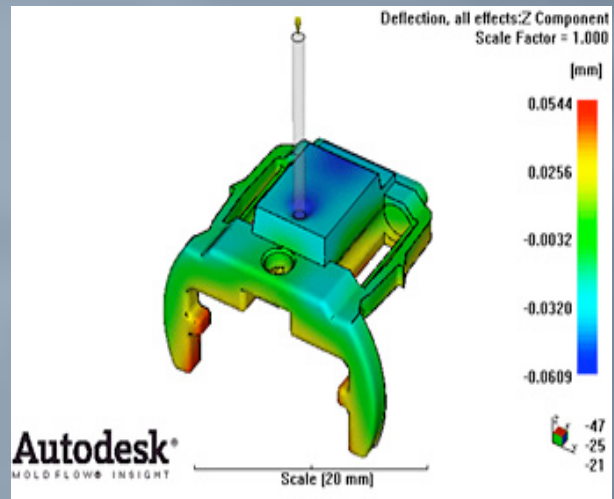
Software Engineering

CAD/CAM/CAE Software:

- 1) Pro/ENGINEER (2001 & wildfire Format)
- 2) SolidWorks 2006
- 3) Unigraphics NX2.0
- 4) Delcam Powermill 6.0
- 5) MoldFlow Plastics Insight
- 6) AutoCAD 2006

File extension

- PRT
- IGS
- STEP
- DXF
- DWG



In-house drawing office, covering 3000m², is fully equipped with state-of-the-art CNC, EDM machines, to enable maximum efficiency to build a wide range of injection moulds.